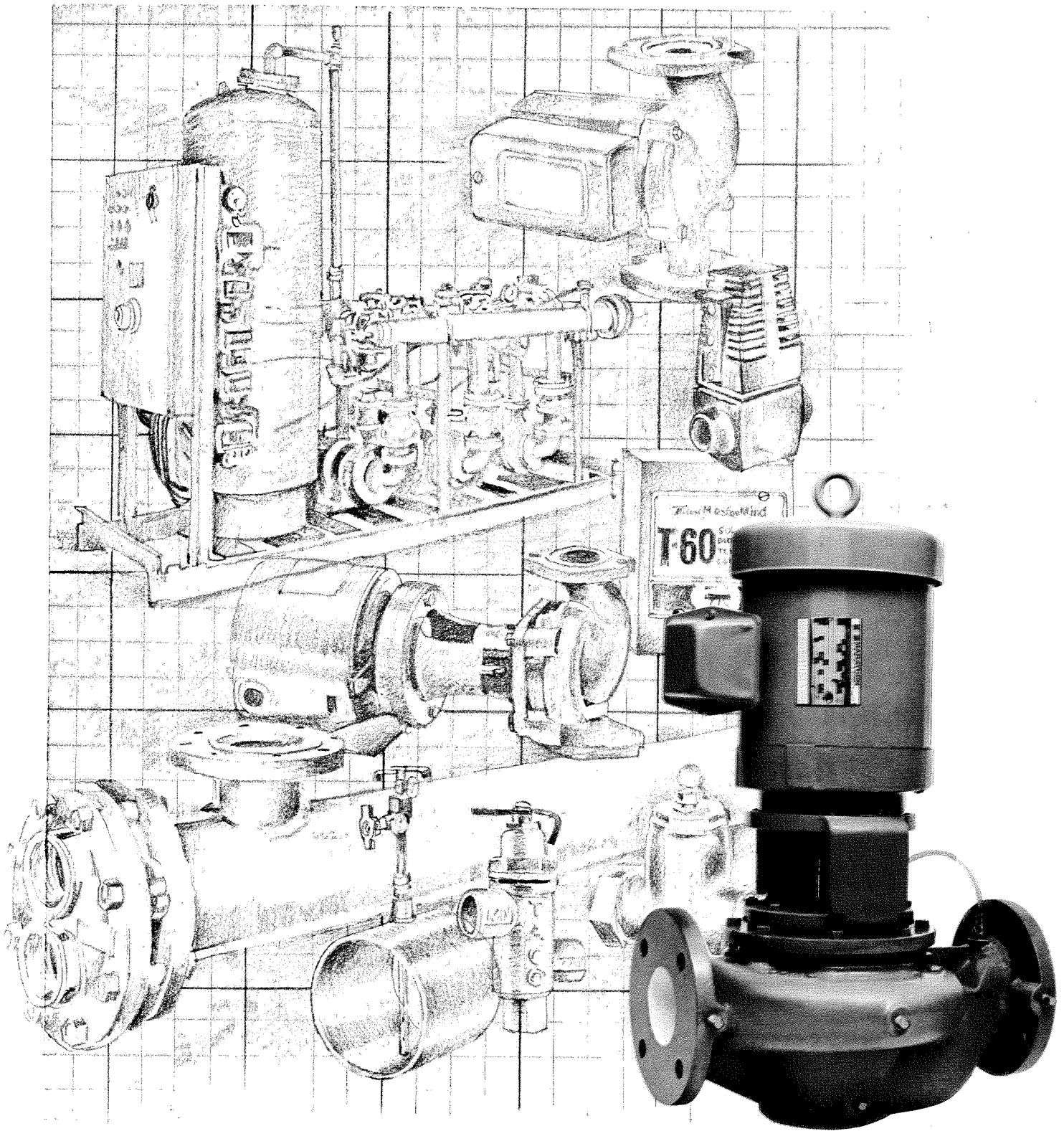
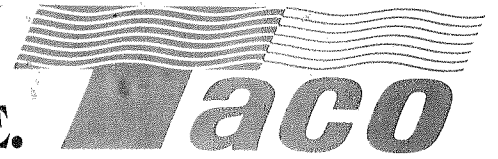


Quality Through Design – COMPARE.



"VL" VERTICAL IN-LINE PUMP

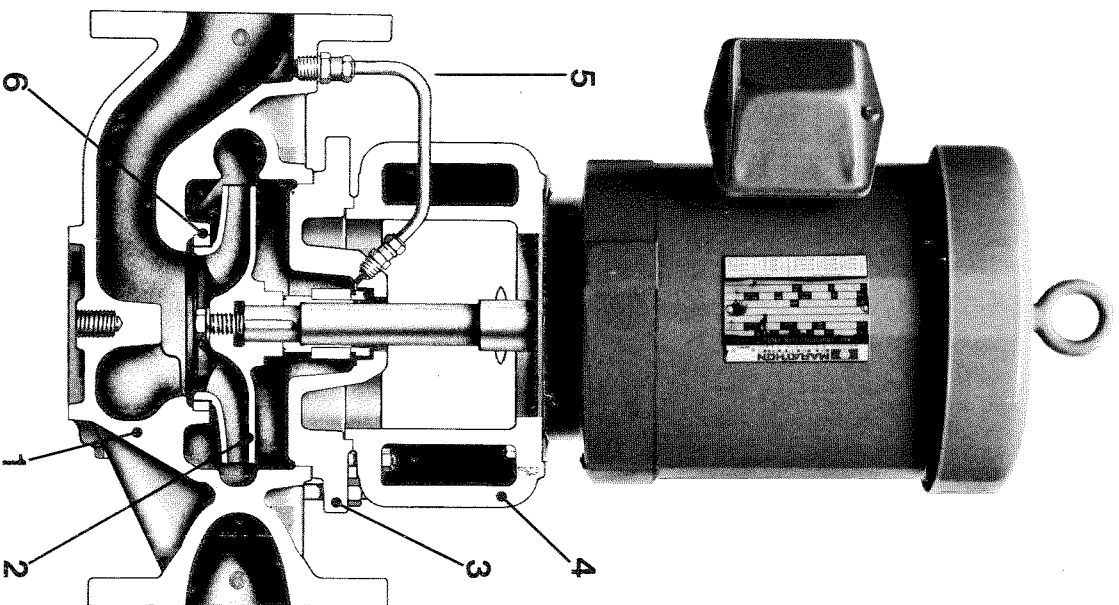
CATALOG 300-1.2

"V" SERIES IN-LINE PUMPS

Heavy duty industrial design with standard frame ball bearing motor.

FEATURES

1. Cast iron casing with in-line suction and discharge flanged branches, drilled for direct installation in pipeline. Also drilled and tapped gauge connections.
2. Advanced impeller design, with Francis vanes as standard on most sizes, provides excellent NPSH/Discharge Head combination. Hydraulically balanced by back vanes.
3. Back-pull-out facility permits removal of motor, motor adaptors, mechanical seal and impeller without disturbing pipe connections.
4. Four motor adaptors cover all pump and motor combinations.
5. Seal flush line to cool seal faces and extend seal life.
6. Replaceable wear rings are standard in all casings.



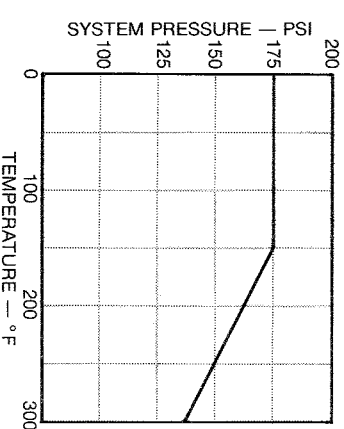
MATERIALS OF CONSTRUCTION

Description	Bronze Fitted	All Iron
Wetted Parts	Cast Iron ASTM A48-GR35	Cast Iron ASTM A48-GR35
Impeller	Bronze ASTM B584-C-836	Cast Iron ASTM A48-GR35
Wear Ring	Bronze ASTM B584-C-836	Cast Iron ASTM A48-GR35
Shaft Sleeve	Bronze ASTM B584-C-836	Stainless Steel AISI 420

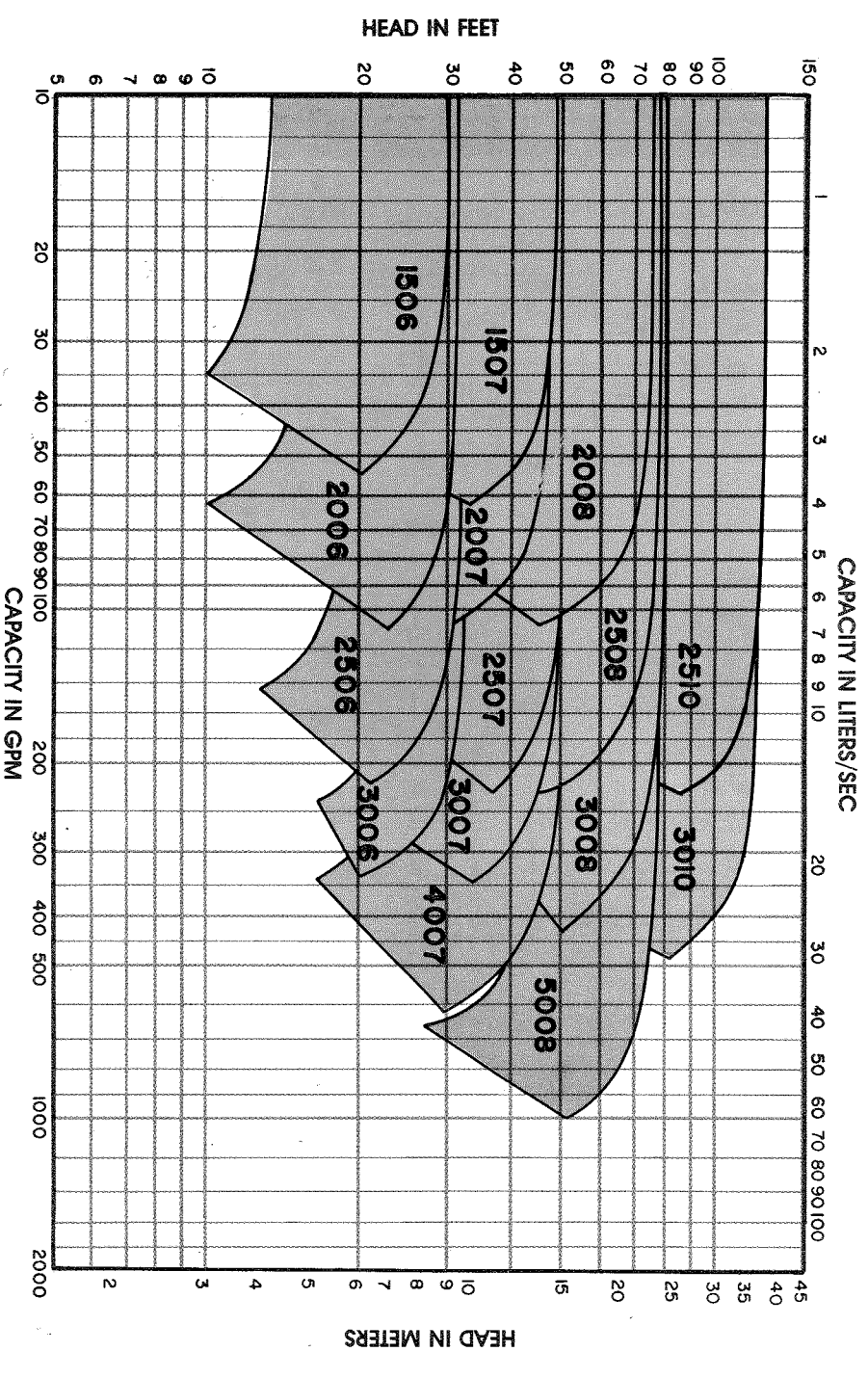
SEALS

"V" Series pumps are available with a wide variety of seal face materials to meet most system conditions. Standard seals have Ni-resist seal with carbon washer, tungsten carbide is available for high temperature or contaminated conditions and ceramic is available for fresh water applications. See selection chart. External seal flush line provided as standard on all models.

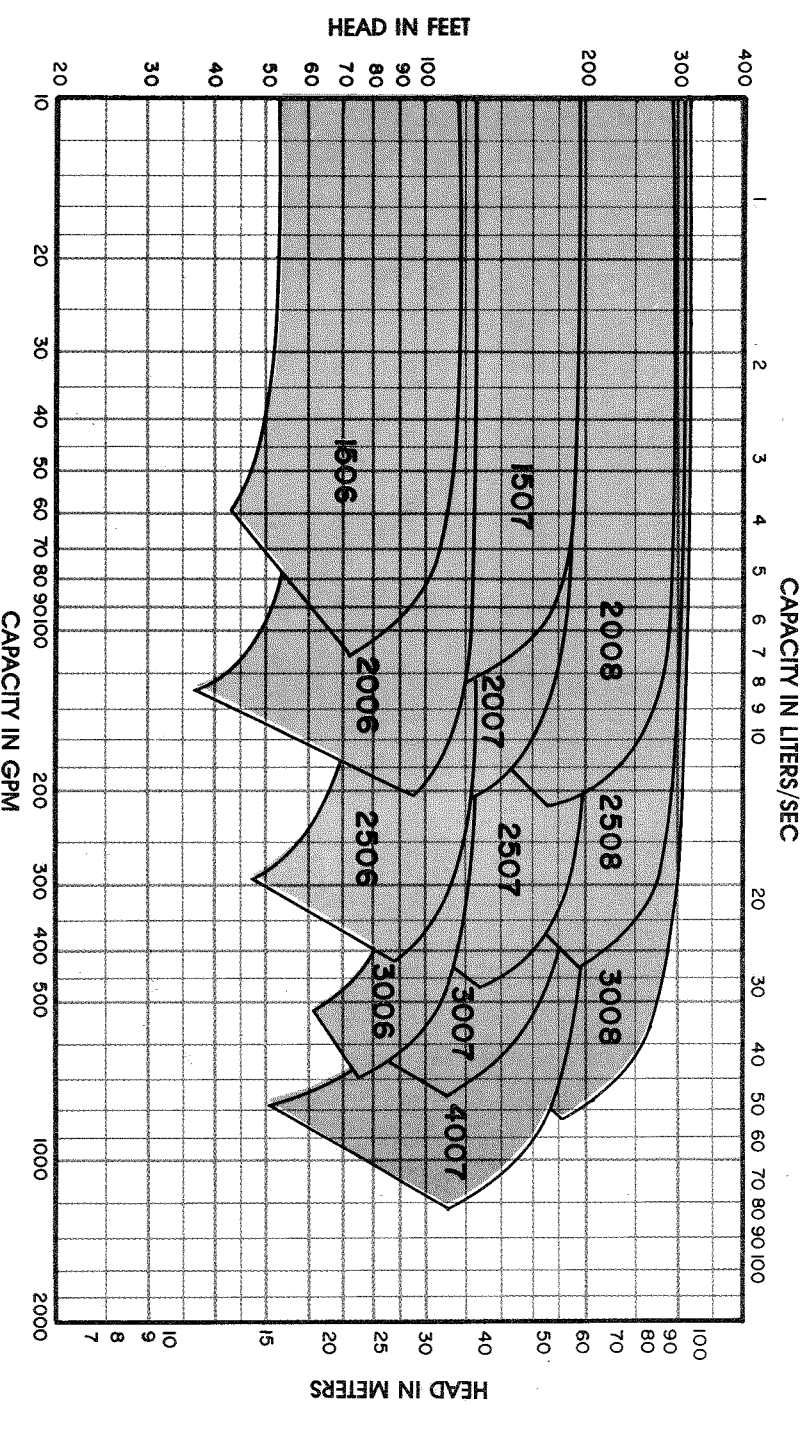
PRESSURE-TEMPERATURE RATINGS



"V" SERIES PERFORMANCE FIELD 1750 RPM

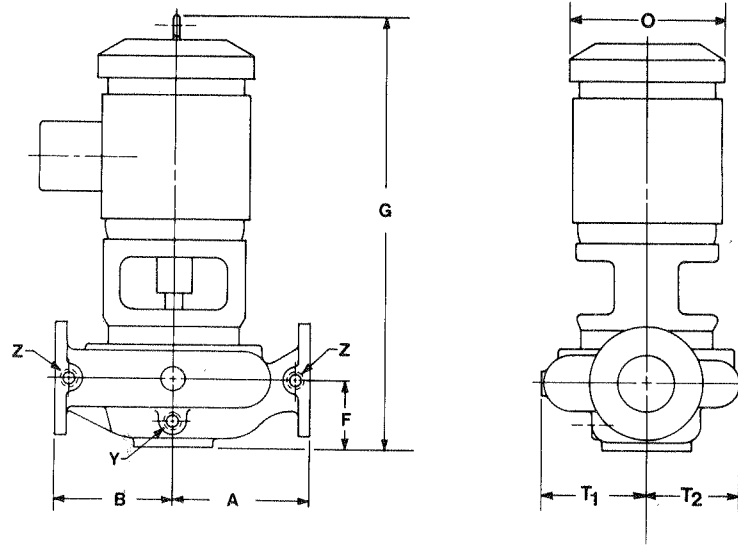


PERFORMANCE FIELD 3450 RPM



Quality Through Design — COMPARE.

"VL" SERIES PUMP DIMENSIONS



**1750
RPM**

Model No.	HP	Flange Connection	A	B	F	G Max.	O Max.	T ₁	T ₂	Y	Z
1506	1	1 1/2	6 ³ / ₃₂	5 ⁵ / ₁₆	3 ³ / ₄	22 ¹ / ₂	6 ⁷ / ₈	4 ¹¹ / ₁₆	4 ¹ / ₄	3 ³ / ₈	1 ¹ / ₄
1507	1, 1 1/2	1 1/2	6 ⁷ / ₈	6 ³ / ₃₂	3 ³ / ₄	22 ¹ / ₂	6 ⁷ / ₈	5 ⁵ / ₁₆	5	3 ³ / ₈	1 ¹ / ₄
2006	1, 1 1/2	2	6 ¹ / ₂	5 ⁵ / ₁₆	3 ¹⁵ / ₁₆	22 ¹ / ₂	6 ⁷ / ₈	5 ¹ / ₈	4 ¹ / ₂	3 ³ / ₈	1 ¹ / ₄
2007	1, 1 1/2, 2	2	7 ⁹ / ₃₂	6 ³ / ₃₂	3 ¹⁵ / ₁₆	22 ¹ / ₂	6 ⁷ / ₈	5 ⁹ / ₁₆	5 ¹ / ₈	3 ³ / ₈	1 ¹ / ₄
2008	1, 1 1/2, 2, 3	2	7 ¹¹ / ₁₆	6 ⁷ / ₈	3 ¹⁵ / ₁₆	25 ¹ / ₈	10 ¹ / ₂	6 ¹ / ₈	5 ³ / ₄	3 ³ / ₈	1 ¹ / ₄
2506	1, 1 1/2, 2	2 1/2	7	6 ³ / ₃₂	4 ¹ / ₈	23	6 ⁷ / ₈	5 ⁷ / ₁₆	4 ³ / ₄	3 ³ / ₈	1 ¹ / ₄
2507	1 1/2, 2, 3, 5	2 1/2	7 ¹¹ / ₁₆	6 ⁷ / ₈	4 ¹ / ₈	25 ¹ / ₈	10 ¹ / ₂	6	5 ⁵ / ₁₆	3 ³ / ₈	1 ¹ / ₄
2508	2, 3, 5	2 1/2	8 ¹ / ₄	7 ¹¹ / ₁₆	4 ¹ / ₈	25 ¹ / ₈	10 ¹ / ₂	6 ⁹ / ₁₆	6	3 ³ / ₈	1 ¹ / ₄
2510	5, 7 1/2, 10	2 1/2	9 ²¹ / ₃₂	8 ²¹ / ₃₂	4 ¹ / ₈	29	12 ¹ / ₄	7 ⁵ / ₁₆	6 ¹¹ / ₁₆	3 ³ / ₈	1 ¹ / ₄
3006	1 1/2, 2, 3	3	9 ¹ / ₄	6 ⁷ / ₈	5 ¹ / ₈	26 ¹ / ₈	10 ¹ / ₂	6 ¹ / ₂	5 ¹ / ₄	3 ³ / ₈	1 ¹ / ₄
3007	1 1/2, 2, 3, 5	3	9 ¹ / ₄	7 ¹¹ / ₁₆	5 ¹ / ₈	26 ¹ / ₈	10 ¹ / ₂	6 ⁷ / ₈	5 ¹¹ / ₁₆	3 ³ / ₈	1 ¹ / ₄
3008	3, 5, 7 1/2, 10	3	9 ¹³ / ₁₆	8 ¹¹ / ₁₆	5 ¹ / ₈	30	12 ¹ / ₄	7 ³ / ₁₆	6 ³ / ₈	3 ³ / ₈	1 ¹ / ₄
3010	7 1/2, 10, 15, 20	3	10 ⁵ / ₈	9 ⁵ / ₈	5 ¹ / ₈	32	16	7 ¹¹ / ₁₆	6 ⁷ / ₈	3 ³ / ₈	1 ¹ / ₄
4007	3, 5, 7 1/2	4	10 ⁷ / ₁₆	8 ¹¹ / ₁₆	5 ²⁹ / ₃₂	30	12 ¹ / ₄	7 ¹ / ₄	5 ⁷ / ₈	3 ³ / ₈	1 ¹ / ₄
5008	7 1/2, 10, 15, 20	5	13 ⁵ / ₃₂	10 ¹³ / ₁₆	6 ²¹ / ₃₂	36	16	8 ¹ / ₂	6 ³ / ₄	3 ³ / ₈	1 ¹ / ₄

**3450
RPM**

Model No.	HP	Flange Connection	A	B	F	G Max.	O Max.	T ₁	T ₂	Y	Z
1506	1 1/2, 2, 3, 5	1 1/2	6 ³ / ₃₂	5 ⁵ / ₁₆	3 ³ / ₄	24 ⁵ / ₈	10 ¹ / ₂	4 ¹¹ / ₁₆	4 ¹ / ₄	3 ³ / ₈	1 ¹ / ₄
1507	3, 5, 7 1/2, 10	1 1/2	6 ⁷ / ₈	6 ³ / ₃₂	3 ³ / ₄	27	12 ¹ / ₄	5 ⁵ / ₁₆	5	3 ³ / ₈	1 ¹ / ₄
2006	3, 5, 7 1/2	2	6 ¹ / ₂	5 ⁵ / ₁₆	3 ¹⁵ / ₁₆	25 ¹ / ₈	10 ¹ / ₂	5 ¹ / ₈	4 ¹ / ₂	3 ³ / ₈	1 ¹ / ₄
2007	5, 7 1/2, 10, 15	2	7 ⁹ / ₃₂	6 ³ / ₃₂	3 ¹⁵ / ₁₆	28 ¹ / ₂	12 ¹ / ₄	5 ⁹ / ₁₆	5 ¹ / ₈	3 ³ / ₈	1 ¹ / ₄
2008	7 1/2, 10, 15, 20	2	7 ¹¹ / ₁₆	6 ⁷ / ₈	3 ¹⁵ / ₁₆	33	16	6 ¹ / ₈	5 ³ / ₄	3 ³ / ₈	1 ¹ / ₄
2506	5, 7 1/2, 10, 15	2 1/2	7	6 ³ / ₃₂	4 ¹ / ₈	29	12 ¹ / ₄	5 ⁷ / ₁₆	4 ³ / ₄	3 ³ / ₈	1 ¹ / ₄
2507	10, 15, 20, 25	2 1/2	7 ¹¹ / ₁₆	6 ⁷ / ₈	4 ¹ / ₈	33	16	6	5 ⁵ / ₁₆	3 ³ / ₈	1 ¹ / ₄
2508	15, 20, 25, 30, 40	2 1/2	8 ¹ / ₄	7 ¹¹ / ₁₆	4 ¹ / ₈	35 ³ / ₈	16	6 ⁹ / ₁₆	6	3 ³ / ₈	1 ¹ / ₄
3006	10, 15, 20	3	9 ¹ / ₄	6 ⁷ / ₈	5 ¹ / ₈	32 ¹ / ₂	16	6 ¹ / ₂	5 ¹ / ₄	3 ³ / ₈	1 ¹ / ₄
3007	10, 15, 20, 25, 30, 40	3	9 ¹ / ₄	7 ¹¹ / ₁₆	5 ¹ / ₈	36 ³ / ₈	16	6 ⁷ / ₈	5 ¹¹ / ₁₆	3 ³ / ₈	1 ¹ / ₄
3008	25, 30, 40, 50, 60	3	9 ¹³ / ₁₆	8 ¹¹ / ₁₆	5 ¹ / ₈	38 ⁷ / ₁₆	18 ⁷ / ₈	7 ³ / ₁₆	6 ³ / ₈	3 ³ / ₈	1 ¹ / ₄
4007	20, 25, 30, 40, 50, 60	4	10 ⁷ / ₁₆	8 ¹¹ / ₁₆	5 ²⁹ / ₃₂	39 ⁷ / ₁₆	18 ⁷ / ₈	7 ¹ / ₄	5 ⁷ / ₈	3 ³ / ₈	1 ¹ / ₄

Allow 6" withdrawal clearance.



Quality Through Design — COMPARE.

Taco, Inc., 1160 Cranston St., Cranston, RI 02920 (401) 942-8000 Telex: 92-7627
 Taco, (Canada) Ltd., 1310 Aimco Blvd., Mississauga, Ontario L4W 1B2 (416) 625-2160